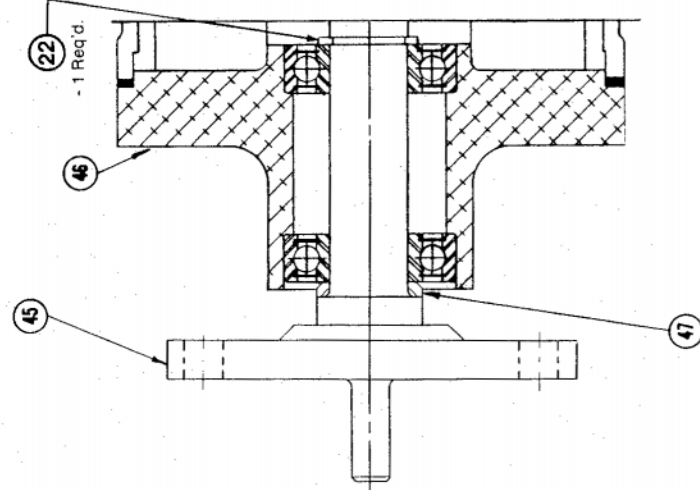


FOOT MOUNTED  
CAM LIMIT SWITCH



SHAFT MOUNTED  
CAM LIMIT SWITCH

Item No.	Part No.	Description	No. Req.
6	302276	Shaft	1
20	159 x 41	Bearing	2
22	139 x 12	Snap ring	1
23	See table C	Breaker points	4
24	See table C	No. 1 cam	1
25	201854	Washer	1
26	See table C	No. 2 cam	1
27	201869	Cam adjusting sleeve	1
28	See table C	No. 3 cam insert	1
28A	306030	No. 3 cam	1
29	203003	Cam adjusting knob	1
30	61 x 22	Jam nut	2
31	412230	End cap	1
32	409346	Bridge	1
33	See table C	No. 4 cam	1
33A	See table C	No. 5 cam	1
34	119 x 23	Felt seal	1
38	507137	Mounting plate	1
40	153 x 530	Flat washer	1
41	203107	Spacer	1
42	404583	Housing	1
45	411367	Shaft	1
46	405330	Housing	1
47	203351	Spacer	1

The part no. for the complete assembly is stamped on the timer decal. Identify the timer with this number when specifying component parts.

TABLE C

Complete Assembly Part Number For:	Direction of Rotation	Part No.					
		Item No. 23 Breaker Points	Item No. 24 No. 1 Cam	Item No. 26 No. 2 Cam	Item No. 28 No. 3 Cam Insert	Item No. 33 No. 4 Cam	Item No. 33A No. 5 Cam
145748 AL 145748 AO	Clockwise	133 x 201	201856	201857	306029	203256	203257
145748 AM 145748 AR	Clockwise	133 x 200	201858	201859	306028	203254	203255
145748 AN 145748 AS	Clockwise 30° Dwell	133 x 201	201861	201862	306029	203256	203257
145748 AP 145748 AT	Clockwise 30° Dwell	133 x 200	201863	201864	306028	203254	203255

Part No. for Optional Cam No. 3 (Item No. 28A), is as follows:  
203002 (For clockwise and clockwise 30° dwell)  
203087 (for clockwise and clockwise 30° dwell)

Eaton Corporation  
Airflex Division  
Cleveland, Ohio 44144

**EATON**